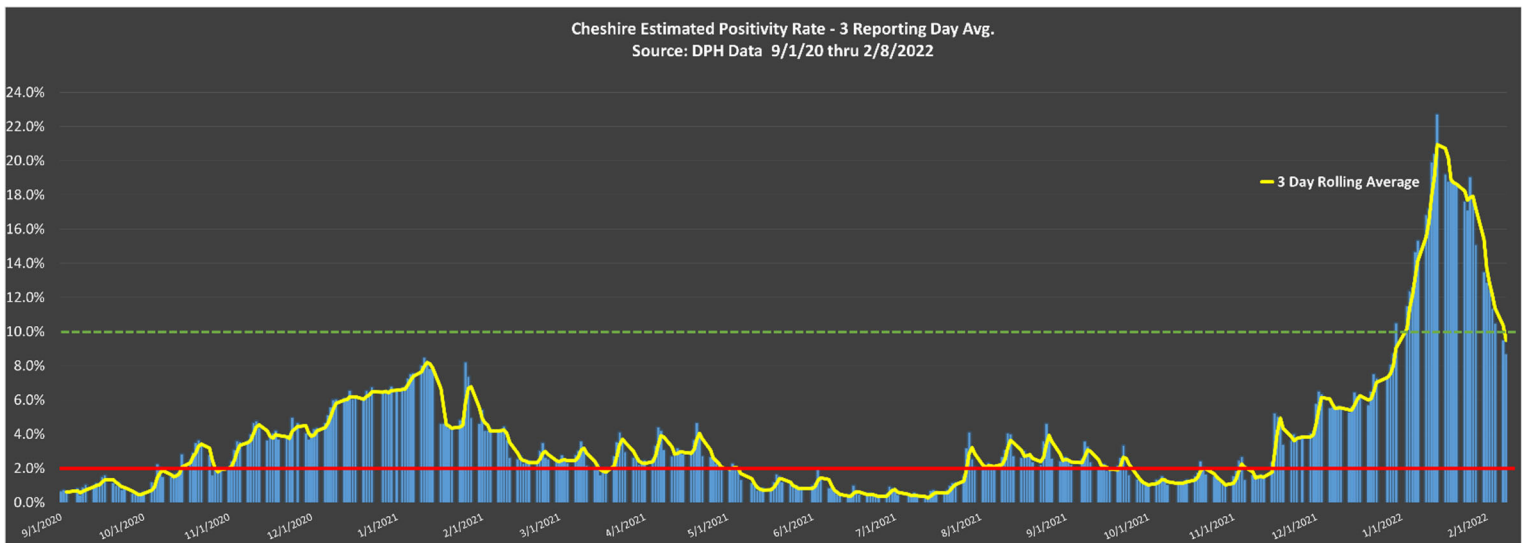


TOWN OF CHESHIRE
84 SOUTH MAIN STREET, CHESHIRE, CONNECTICUT 06410
Telephone (203) 271-6660 FAX (203) 271-6639

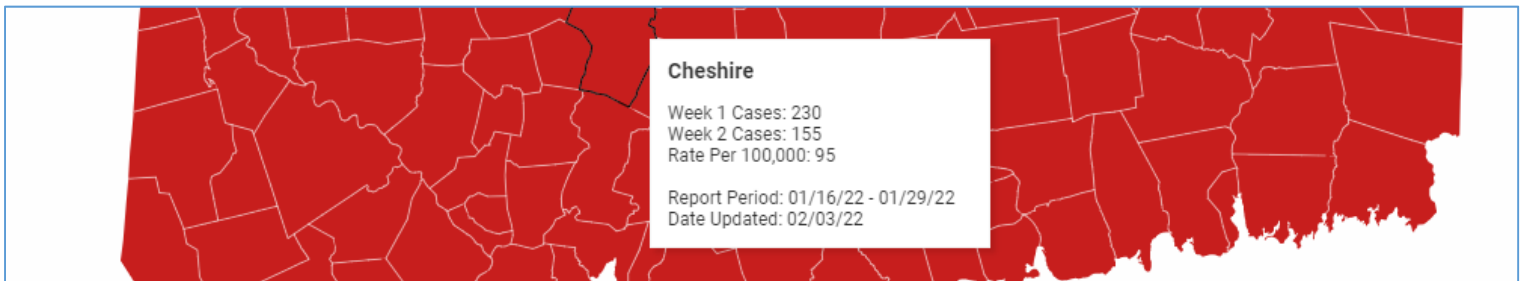
TO: Town Council
FROM: Sean M. Kimball, Town Manager
SUBJECT: Town Manager's Report – February 2022
DATE: February 8, 2022

COVID-19 Pandemic Data

Local COVID positivity rates for Cheshire have fallen significantly over the past three weeks, since a peak experienced on January 14th (22.7% local positivity). This is consistent with trends seen statewide as the spike resulting from spread of the Omicron variant subsides. As of Tuesday, February 8th, our local estimated positivity rate over the past seven DPH reporting days was **8.6%** (136 positives in Cheshire out of 1,577 tests and down from 16.8% last month). The rolling 3-day average of this reported metric (yellow line) is currently **9.5%** (down from 13.3% last month).

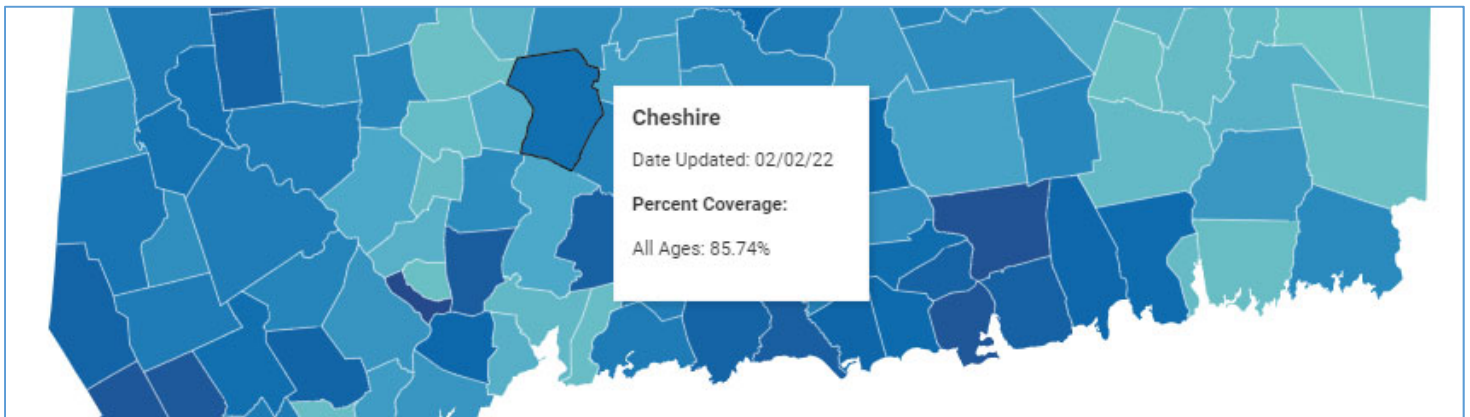


Local case rates in Cheshire have kept us in the “Red” alert level per the weekly color designation from DPH, based on the average daily cases per 100,000 population (Cheshire is reported at 95.0 cases per 100k, down from 137.7 last month).



To date, 85.74% of Cheshire residents of all ages have received at least one vaccination dose, an increase of 1.10% over last month (84.64%).

Percent of Population All Ages Who Have Received at Least One Dose of COVID-19 Vaccination



Testing Locations N95 Masks and Home Test Kits

List of 94 Testing Locations in Cheshire’s Area (DHMAS Region 2):

https://www.chshirect.org/UserFiles/Servers/Server_8580856/File/Government/Town%20Manager/Testing%20Locations%20Region%202.pdf

Hartford Healthcare Testing Locations & Appointments:

<https://hartfordhealthcare.org/health-wellness/coronavirus/testing>

Yale New Haven Health Testing Locations & Appointments:

<https://www.ynhhs.org/patient-care/covid-19/testing/testing-locations>

Free N-95 Masks for Residents

The Town is continuing to distribute N-95 masks received from the State of Connecticut to Cheshire residents at two locations in town during regular business hours: the Senior Center and the Cheshire Library. Residents with ID or a utility bill can pick up one mask for each member of their household.

At-Home Test Kits

Consistent with the Governor’s directions, the Town has prioritized remaining rapid “at-home” antigen tests for local vulnerable populations, congregate settings including Cheshire Rehab, Marbridge and Elim Park. Kits were also provided to the Cheshire Housing Authority, local churches, group homes and clients of the Cheshire Food Pantry. Kits are also available as needed on a case by case basis for individuals with mental, physical, intellectual or other developmental disabilities through Cheshire Human Services. Remaining tests are being reserved for critical municipal workforce with a portion reserved for future COVID variant waves.

Attached please also find the updated CPS policy and metrics regarding masks in schools released on February 8, 2022.

Economic Development Update

- Clarivision Optometrist Opened at 28 South Main Street
- ReMax Rise Realty Opened at 1079 South Main Street
- Sakana Asian Fusion Bistro under construction in Cheshire Shopping Center
- Rebel Interactive submitted renovation plans to Town Building Department on 2/4/2022
- Regional Water Authority has pulled waterline through the sleeve under 691
- Sewer line work progresses on Dickerman Street extending on North End parcel
- State Property Conveyance at 691- Phase I Environmental Site assessment will be performed prior to accepting property conveyance from State of Connecticut.
- Ball & Socket Arts – Renovation and fit out for Phase I – Building 2 work continues with contractors on site for May 1st 2022 Sweet Claude’s opening
- Counterweight Brewing Company – Town Manager and Econ. Dev. Coordinator toured new headquarters on Diana Court on February 8th. Some supply chain delays remain on certain pieces of equipment but they have been making significant progress toward a certificate of occupancy for the building. Working with Building, Chesprocott, Planning & Zoning and Fire departments on inspections and approvals. Opening date remains TBD, but likely March or April.

Eversource Tree Trimming – 2022

Eversource will be conducting 93.74 miles of scheduled tree trimming in 2022 beginning this spring. 34.70 miles of “backbone” maintenance trimming will take place along primary roads while 59.03 miles of scheduled side roads will also receive trimming. Please see the attached map of Cheshire for scheduled roads, and please contact the Department of Public Works with any questions.

Public Works Academy

Congratulations to DPW crew members Jack Morely and Jeff Schiavi who have successfully completed the UConn/T2 Public Works Academy. This 6 week program included coursework on:

- Professionalism in Public Works/Communication Skills
- Road Fundamentals
- Operational Safety for Public Works
- Flagger Certification/Work Zone Safety
- Chainsaw Safety/Storm Clean-up Issues
- Safe Operation of a Snow Plow/Winter Operations (including Sander Calibration)

Thank you and congratulations to Jack and Jeff!

PEGPETIA Grant Submittal

On January 28, 2022, the Town submitted an application for the 2022 PEGPETIA grant. This request was in the amount of \$33,300 to be used towards updates to the Town's live broadcasting equipment for board, committee, and commission meetings.

Regional Water Authority – Switch to Monthly Billing

The Town is spreading the word and reminding residents/customers of the RWA that they will be beginning to receive monthly water bills this month, depending upon where their prior 3 month cycle ends. More information is available on the RWA's website at <https://www.rwater.com/>.

Upcoming Town Council & Sub-Committee Meetings

Special Town Council Meeting

February 22, 2022 – (Tentative)

Town Council Planning Committee Meeting

February 17, 2022 - 6:30pm

Town Council Budget Committee Meeting

March 8, 2022 - 6:30pm

Town Council Regular Meeting

March 8, 2022 – 7:00pm



Cheshire Public Schools Mask Requirement Metrics

February 4, 2022 (Process to be implemented effective for 3/1/22)

The Town of Cheshire and Cheshire Public Schools are continuing to very closely monitor local COVID-19 metrics and consult with State and local health officials to determine appropriate protocols in response to the recent increase in positive cases linked to the Omicron variant of the disease.

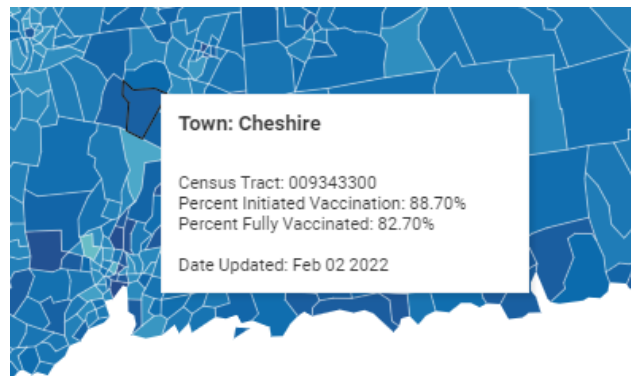
The Centers for Disease Control (CDC) strongly encourages all eligible residents to be vaccinated if they have not already done so, as this remains the most effective way to reduce spread and mitigate the severity of a potential infection. Vaccines are readily available at many convenient locations including our Chesprocott Health District, who can be reached at 203-272-2761.

Masks have been proven to be a significant mitigating factor in the spread of the COVID-19 virus. Of course, the wearing of masks can also present challenges of comfort, audibility, and expression. In consultation with our medical advisors and best practices as defined by the CDC, there are several factors for consideration regarding mask wearing in our schools. **Our medical advisors have agreed that if we meet the threshold for two or more of these criteria, masks may be considered optional in schools.**

The State releases relevant COVID-19 data every Thursday evening and that data will be reviewed each Friday with a community update issued by the Cheshire Public Schools for the following Monday.

The Three Factors

The first consideration is vaccine prevalence. Cheshire has an extraordinarily high vaccine prevalence as a community (82.7% of eligible residents fully vaccinated) and a school district (in excess of 96% fully vaccinated).

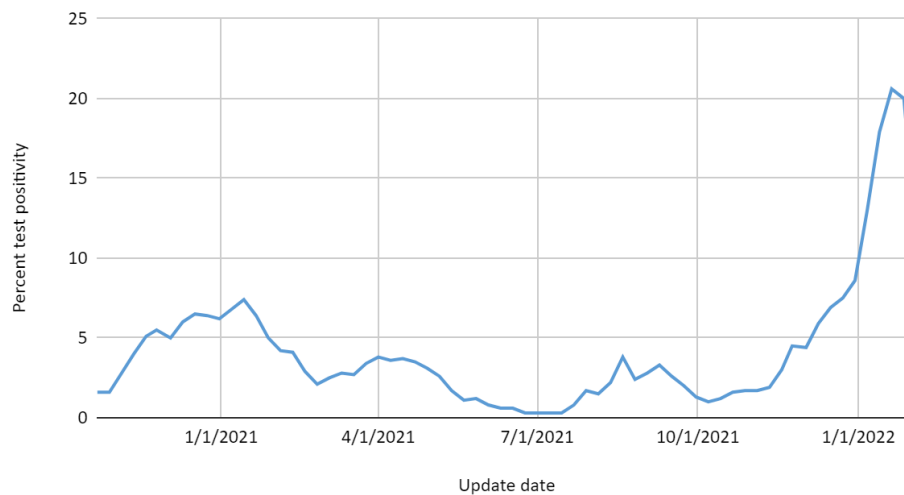


Fifty percent of Cheshire residents aged 5-11 are fully vaccinated. Seventy percent of residents aged 12-17 are fully vaccinated. The district has been diligent in providing vaccination clinics for students and staff over the past year. The state vaccination averages are 32% for ages 5-11 and 66% for ages 12-17.

This factor has been met to permit a mask optional condition.

The second factor for consideration in the determination of mask wearing is the current rate of positivity in the community. Connecticut posts the positivity rate each Thursday evening. It is recommended that a 10% positivity rate is a threshold for concern. The chart below illustrates the current (11.9% as of 2/3/22) positivity rate and historical data.

Cheshire Percent test positivity over time



This factor has **not been met** to permit a mask optional condition.

The final metric for consideration is the new cases per 100,000 population. As of 2/3/22, Cheshire is registering 95.0 cases per 100,000 residents. The target rate for cases per 100,000 people has been set at 15 for our community.

This factor **has not been** met to permit a mask optional condition.

Data Analysis Outcome:

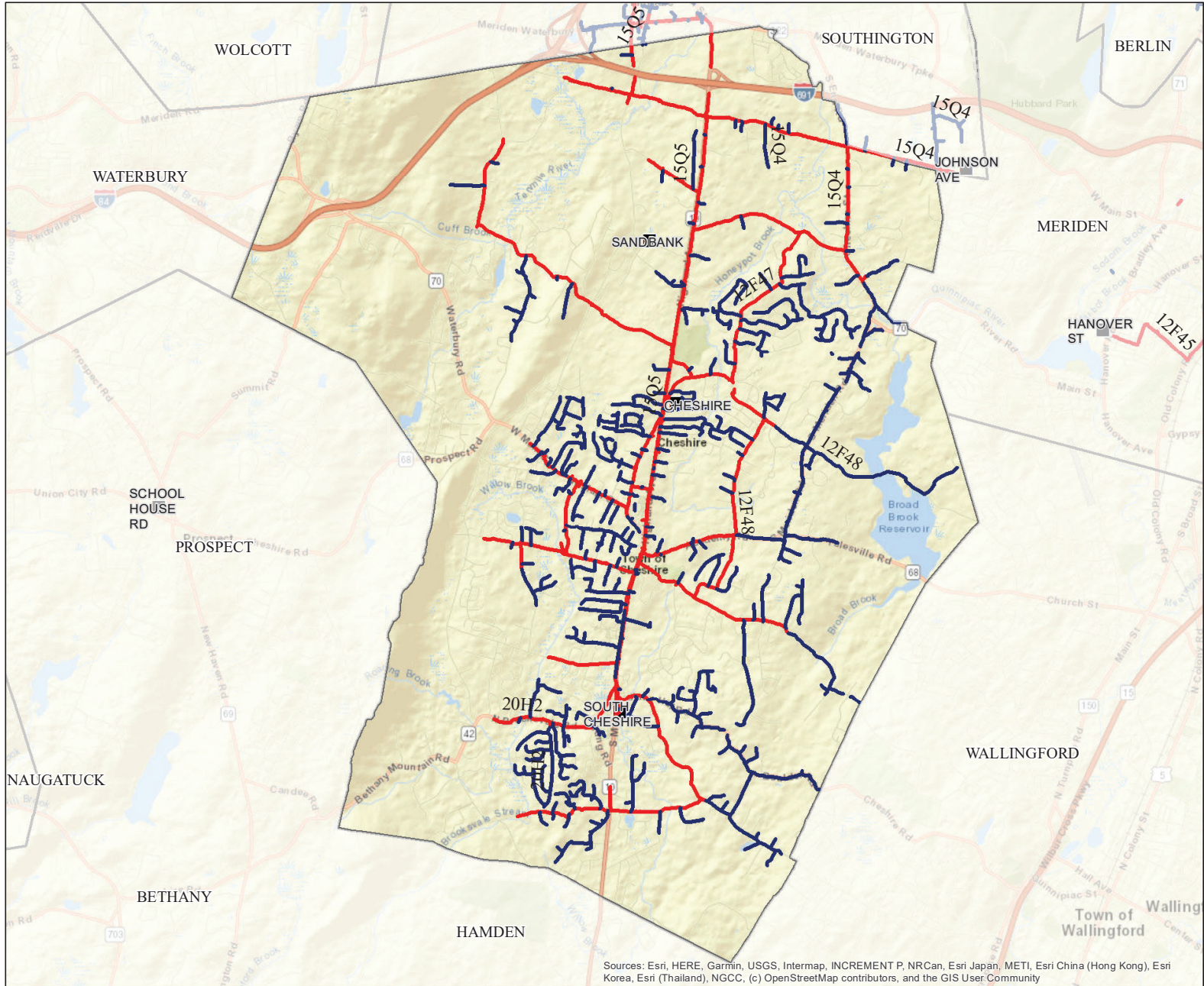
Having met only one of the three factors of consideration, masks are required to be worn.

The State releases relevant COVID-19 data every Thursday evening and that data will be reviewed each Friday with a community update issued by the Cheshire Public Schools for the following Monday.

Masks will continue to be required for individuals identified as close contacts or otherwise identified in the [CPS Quarantine and Isolation Guidance](#). **Final decisions on whether or not exposed/positive individuals must wear masks are made by the school nurse in conjunction with our Medical Advisory Team.**

COVID-19 Vaccinations by Town and Age Group, Case Rate Per 100,000 and 14-Day Positivity Rate by Town are all published weekly on Thursdays- Data available here: <https://data.ct.gov/browse?tags=covid-19>

CDC Recommendation of vaccines for children: <https://www.cdc.gov/media/releases/2021/s1102-PediatricCOVID-19Vaccine.html>



CHESHIRE

OH Primary 2022 Trimming

- Backbone Maintenance Trimming
- Scheduled Maintenance Trimming
- Substations
- Town Boundary

Town Mileage Summary

BB METT:	34.70
SMT:	59.03
Total:	93.74



EVERSOURCE



PROPRIETARY INFORMATION: The material contained on the Overhead Distribution Circuit Map shall be considered proprietary to Eversource (ES), and Users (which shall be defined as any person or entity who has received the Map through sale, purchase, exchange gift, or otherwise) shall keep it in confidence and shall not furnish or disclose it to any third party without the prior written permission of Eversource.

Date: 8/20/2021

Sources: Esri, HERE, Garmin, USGS, Intermap, INCREMENT P, NRCan, Esri Japan, METI, Esri China (Hong Kong), Esri Korea, Esri (Thailand), NGCC, (c) OpenStreetMap contributors, and the GIS User Community